

**2025-2027**  
**SOY BEAN FARMING**  
**CONTRACT**



**CITY OF MADISON, INDIANA**

**BID PACKET**



CITY OF MADISON, INDIANA

# MADISON MUNICIPAL AIRPORT

3919 West IMS Lane  
Madison, IN 47250  
(812) 273-1914

[www.MadisonMunicipalAirport.com](http://www.MadisonMunicipalAirport.com)

---

The Madison Municipal Airport Board of Aviation Commissioners is pleased to present the following property for a multi-year farming lease. If you are interested in farming, we invite you to submit a sealed bid offer under the following terms and conditions:

1. The operator is intent on consolidating all farming operations and obtaining the best value for the farmable areas.
2. The airport property has many varying restrictions that may or may not disqualify a producer from USDA benefits. Potential producers are encouraged to speak with the Jefferson County Farm Service Agency 812-273-2070 on these restrictions. The contractor is responsible for following all rules and regulations regarding land use and restrictions.
3. Bids are due, at the address below, by no later than **5:00 P.M. on November 20, 2024**:

Madison Municipal Airport  
Board of Aviation Commissioners  
3919 West IMS Lane  
Madison, IN 47250

Bids shall be submitted on the Sealed Bid Submittal Form attached hereto. The Board of Aviation Commissioners will open, review, and accept the best bid offer that fits our needs. The accepted offer will be awarded a multi-year contract.

4. Any further questions or comments related to the airport or bid process should be addressed to Airport Director, Brent Spry (812) 273-1914.

Thank you in advance for your consideration and please feel free to contact me us if you have any questions or comments.

Sincerely,

Brent A. Spry  
Airport Director  
Madison Municipal Airport



CITY OF MADISON, INDIANA

# MADISON MUNICIPAL AIRPORT

3919 West IMS Lane

Madison, IN 47250

(812) 273-1914

[www.MadisonMunicipalAirport.com](http://www.MadisonMunicipalAirport.com)

## General Information Packet

### AREAS AND ESTIMATED ACREAGE

<u>CLU</u>	<u>ACRES</u>	<u>CROP</u>	<u>RESTRICTIONS</u>
1	22.76	SOY BEANS	
2	20.83	SOY BEANS	<b>NO CROP WITHIN 100 FT RADIUS OF AWOS</b>
3	11.2	SOY BEANS	
4	13.61	SOY BEANS	
5	19.41	SOY BEANS	
--	--	--	--
--	--	--	--
10	6.94	SOY BEANS	
11	6.56	SOY BEANS	
18	10.86	SOY BEANS	<b>NO CROP WITHIN 400 FEET OF RUNWAY END</b>
20	2.81	SOY BEANS	<b>NO CROP WITHIN 66 FT OF TAXIWAY CENTERLINE</b>
<b>TOTAL</b>		<b>108 ACRES</b>	
<b>ACRES</b>	<b>108</b>	<b>CURRENTLY CROPPED</b>	

**AS OF 2024, ONLY +/- 108 ACRES ARE BEING CROPPED**



# MADISON MUNICIPAL AIRPORT

3919 West IMS Lane  
Madison, IN 47250  
(812) 273-1914

[www.MadisonMunicipalAirport.com](http://www.MadisonMunicipalAirport.com)

---

## Hazardous Wildlife Mitigation

Agricultural crops on airfields are discouraged by the FAA, but are not prohibited. The FAA provides allowances for agricultural production on the AOA provided certain mitigation procedures are followed as outlined in the FAA AC 150/5200-33C, Section 2-6.

*2-6 AGRICULTURAL ACTIVITIES. Because most, if not all, agricultural crops can attract hazardous wildlife during some phase of production, the FAA recommends against the use of airport property for agricultural production, including hay crops, within the separations identified in sections 1-2 through 1-4. If the airport has no financial alternative to agricultural crops to produce income necessary to maintain the viability of the airport, the airport shall follow the crop distance guidelines listed in the table titled "Minimum Distances between Certain Airport Features and Any On Airport Agricultural Crops" found in AC 150/5300-13. The cost of wildlife control and potential accidents should be weighed against the income produced by the on-airport crops when deciding whether to allow crops on the airport.*

Wildlife activity on the agricultural areas controlled by IMS will need to be monitored to determine developing risks and mitigation procedures needed to reduce the risks identified. These mitigation procedures should include, but are not limited to the following:

1. Crop will be selected, to the greatest degree possible, to minimize any potential attractiveness of crops to wildlife.
2. Harvest crops as early as possible.
3. Immediate tillage following harvest to remove crop spillage and residue.
4. Use of pyrotechnics to disperse wildlife from fields.
5. Use of lethal reinforcement, when necessary, to reduce immediate risks.
6. Abide by FAA AC 150/5300-13a (Appendix 17) for crop placement in relation to runways. (attached to this memo).
7. Ensure that agricultural crops do not create airfield obstructions or other safety hazards.



CITY OF MADISON, INDIANA

# MADISON MUNICIPAL AIRPORT

3919 West IMS Lane

Madison, IN 47250

(812) 273-1914

[www.MadisonMunicipalAirport.com](http://www.MadisonMunicipalAirport.com)

## SEALED BID SUBMITTAL FORM

Please complete the following form for the bid. Fill in all blanks.

### **Bid Submitted By:**

Company \_\_\_\_\_

Address \_\_\_\_\_

Contact Person: \_\_\_\_\_

Phone Number: \_\_\_\_\_

### **Bid Offer:**

Soy Bean Price:                      \$ \_\_\_\_\_ Per Acre

### **Additional Offers or Farm Plan Information:**

\_\_\_\_\_  
\_\_\_\_\_  
\_\_\_\_\_  
\_\_\_\_\_

SUBMITTED THIS \_\_\_\_\_ DAY OF \_\_\_\_\_, 2024:

\_\_\_\_\_  
**Name**

\_\_\_\_\_  
**Title**

Please include copies of the following with your Bid Submittal Form:

- Proof of Workman's Compensation Insurance
- Proof of Liability Insurance
- Any Licenses for Spraying if Applicable



CITY OF MADISON, INDIANA

# MADISON MUNICIPAL AIRPORT

3919 West IMS Lane  
Madison, IN 47250  
(812) 273-1914

[www.MadisonMunicipalAirport.com](http://www.MadisonMunicipalAirport.com)

---

## Restrictions

### Federal Aviation Administration Guidelines and Restrictions

Operator will follow all guidelines and rules determined by the Federal Aviation Administration including but not limited to:

- Restrictions on distances crops can be planted in the vicinity of Taxiways and Runways
- No-Till Practices are PROHIBITED
- Ensuring mitigation for Hazardous Wildlife Attractions

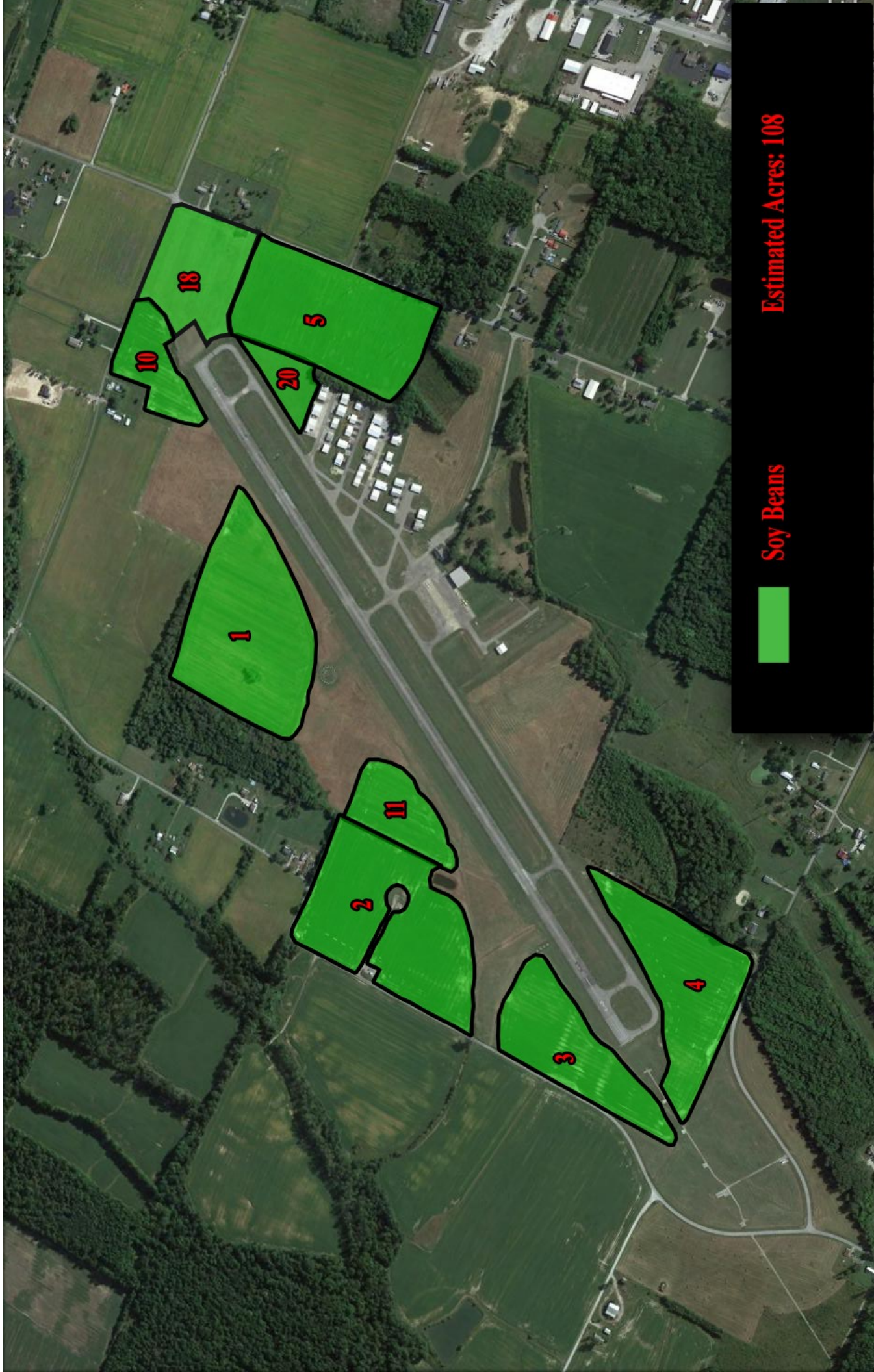
### Highly Erodible Land and Wetland Conservation Determinations

Contractor will follow all guidelines and rules determined by the Farm Service Agency in Regards to Highly Erodible Land (HEL) and Wetland Conservation (WC) practices.

## SAFETY

Operator will follow all guidelines and rules determined by the Madison Municipal Airport including but not limited to:

- Ensuring Safety of Operations within the vicinity of Airport Operations Areas
- Ensuring all workers are properly briefed on
- Ensuring that any and all workers prevent creating situations in which they could create hazards for themselves or to aircraft by the means of vehicle, person, and/or debris.



Estimated Acres: 108

Soy Beans



**USDA Farm 5463 Tract 12151**

Administered by: Jefferson County, Indiana

Map prepared on: 12/2/2016  
 302.78 Tract acres  
 141.05 Cropland acres  
 0 CRP acres

CRP  
 CLU

Wetland Determination Identifiers:

- Restricted Use
- ▼ Limited Restrictions *Jefferson Co., IN*
- Exempt from Conservation Compliance Provisions

Source: Primarily USDA FSA 2016 imagery (2015 IL & OH); IDHS or Dynamap road names



CLU	Acres	HEL	LC	Contract	Prac	Yr	CI
1	22.76	N	2				Y
2	20.83	N	2				Y
3	11.2	N	2				Y
4	13.61	N	2				Y
5	19.41	U	2				Y
6	3.16	N	2				Y
7	7.26	N	2				Y
10	6.94	N	2				Y
11	6.56	N	2				Y
12	1.36	N	2				Y
13	16.47	H	2				Y
14	11.49	H	2				Y
16	2.69	U	10				N
17	0.55	N	10				N
18	10.86	U	10				N
20	2.81	U	10				N
24	0.54	U	10				N
26	8.2	U	10				N
27	36.11	U	10				N
34	6.98	U	10				N
35	82.31	U	10				N
36	10.68	U	10				N

0 430 860 1290 1720 Feet

USDA FSA maps are for FSA program administration only. This map does not represent a legal survey or reflect actual ownership; rather it depicts information provided directly from the producer and/or NAIP imagery. The producer accepts the data 'as is' and assumes all risks associated with its use. The USDA Farm Service Agency assumes no responsibility for actual or consequential damage incurred as a result of any user's reliance on this data outside FSA programs. Wetland identifiers do not represent the size, shape, or specific determination of the area. Refer to your original determination (CPA-026 and attached maps) for exact boundaries and determinations or contact NRCS.

**USDA Farm 5463 Tract 12152**

Administered by: Jefferson County, Indiana

Map prepared on: 12/2/2016  
 7.48 Tract acres  
 0.8 Cropland acres  
 0 CRP acres

CRP  
 CLU

Wetland Determination Identifiers:

- Restricted Use
- ▼ Limited Restrictions *Jefferson Co., IN*
- Exempt from Conservation Compliance Provisions

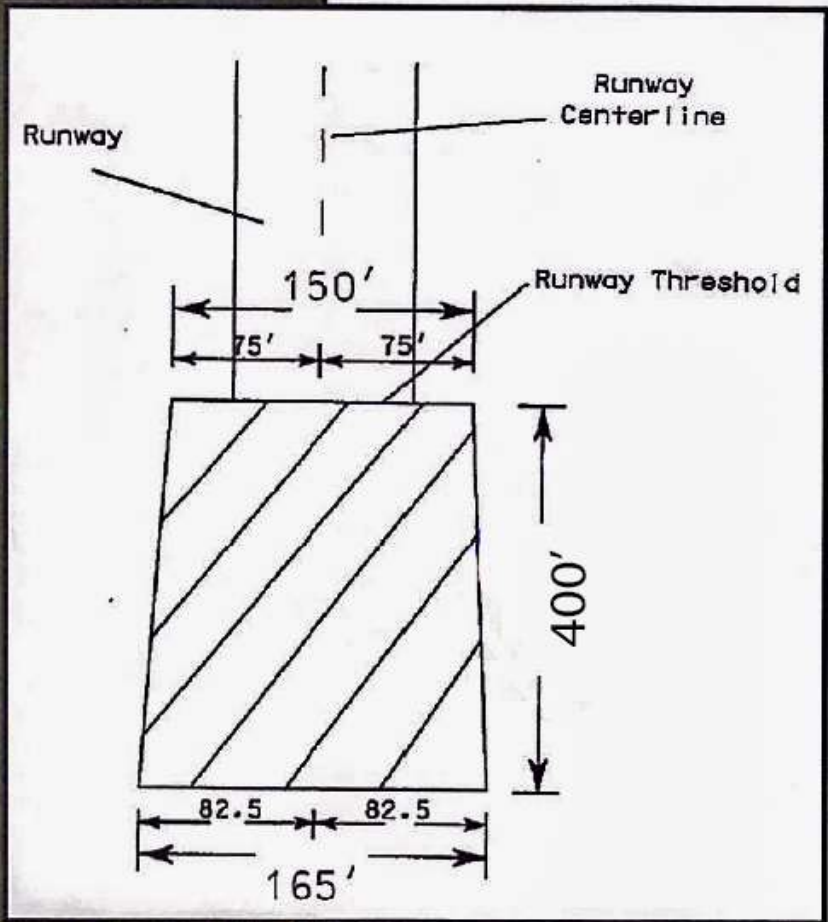
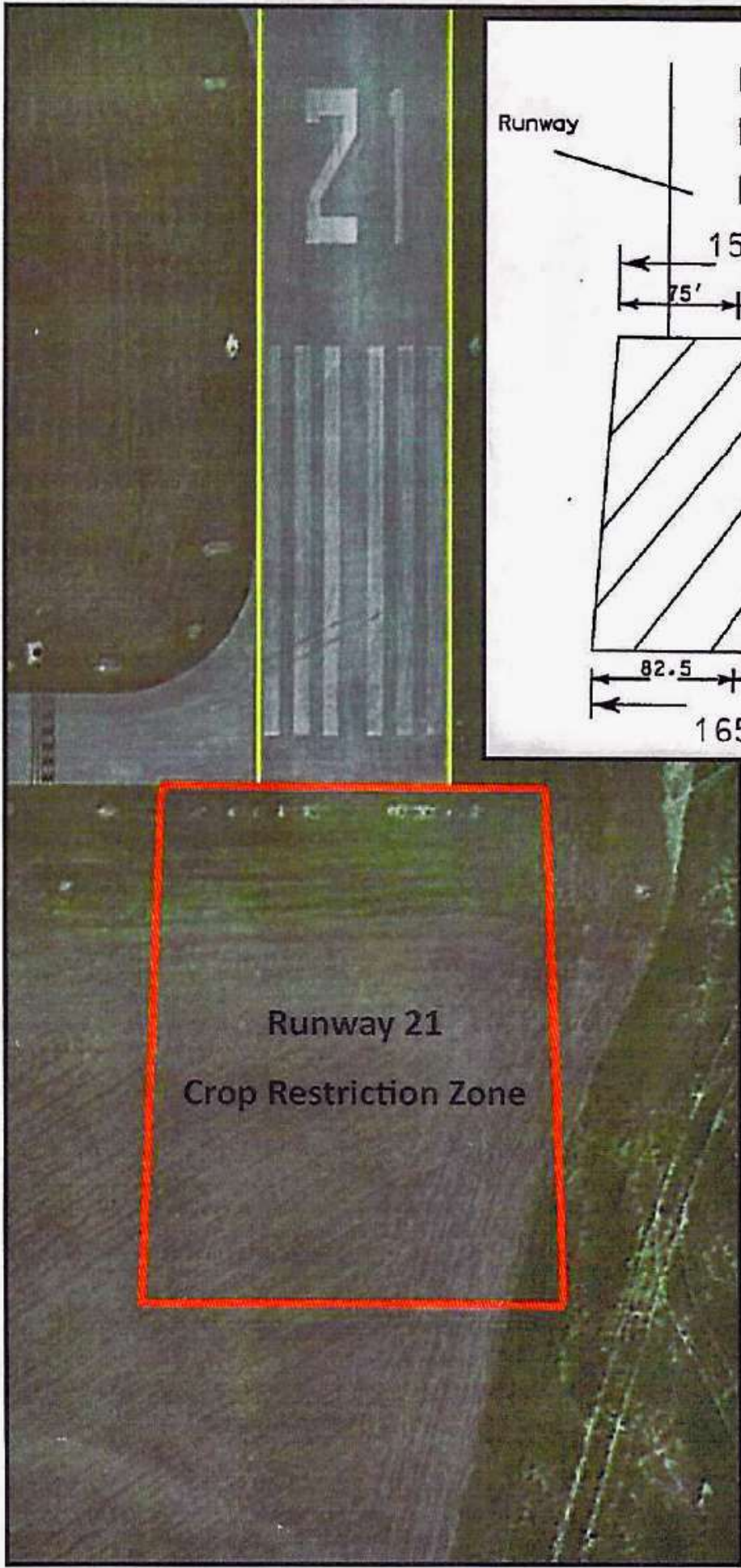


Source: Primarily USDA FSA 2016 Imagery (2015 IL & OH); IDHS or Dynamap road names



CLU	Acres	HEL	LC	Contract	Prac	Yr	C I
1	2.45	U	10				N
2	0.8	N	2				Y
3	4.23	U	10				N

USDA FSA maps are for FSA program administration only. This map does not represent a legal survey or reflect actual ownership; rather it depicts information provided directly from the producer and/or NAIP imagery. The producer accepts the data 'as is' and assumes all risks associated with its use. The USDA Farm Service Agency assumes no responsibility for actual or consequential damage incurred as a result of any user's reliance on this data outside FSA programs. Wetland identifiers do not represent the size, shape, or specific determination of the area. Refer to your original determination [CPA-026 and attached maps] for exact boundaries and determinations or contact NRCS.



Runway 21  
Crop Restriction Zone